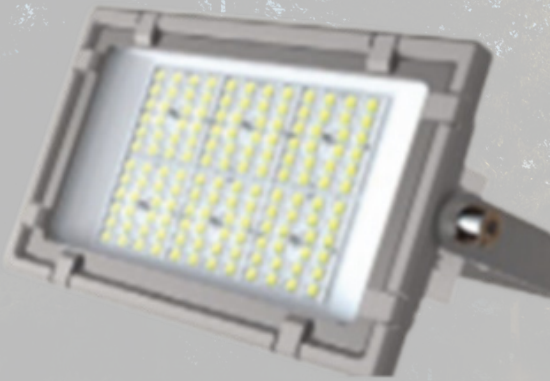


GHENTI TUNNEL LIGHT



KEY ADVANTAGES

- > With two variations of asymmetric beam options
- > Four sizes available to choose
- > Highly protected against water and dust
- > Housing is completely integrated aluminum die-casting, with separate light source and power supply cavity, reduces risks due to excessive temperature
- > Tempered glass reducing environmental damage to optical, effectively extending lifespan

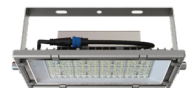
GHENTI offers a unique combination of features in a slender housing for lighting the entrance, threshold and interior zones of a tunnel.

Available in various sizes and with various lumen packages, GHENTI offers high resistance to water, dust ingress and impacts.

The photometry of GHENTI can be either symmetrical or asymmetrical to adapt to the tunnel layout. This lighting solution offers a uniform lighting and superior visibility in critical areas such as the entrance and exit zones of a tunnel.

GHENTI offers several mounting possibilities. For example, it can be fixed directly onto a cable rack. The photometry can be adjusted on-site thanks to a tiltable bracket.

GHENTI guarantees long-lasting performance with minimum maintenance.



Bracket/Surface
Mounting

APPLICATIONS



TUNNEL &
UNDERPASS



INDUSTRIAL
HALLS &
WAREHOUSES

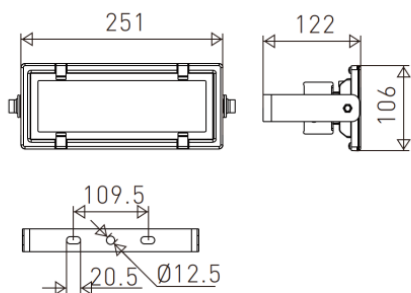
IP 66

IK 08

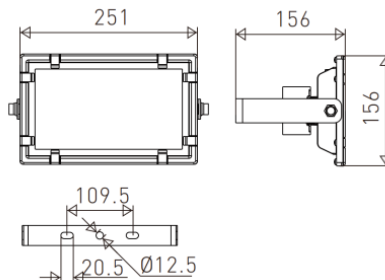
CE



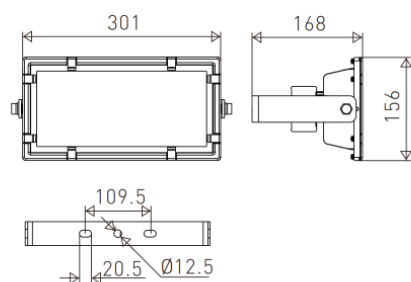
DIMENSIONS AND MOUNTING



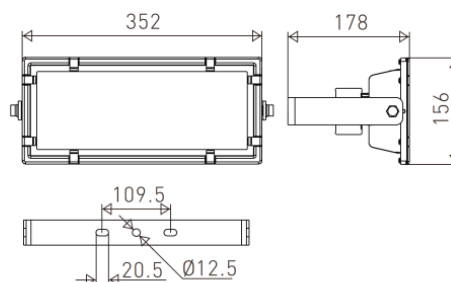
GHENTI 621



GHENTI 622



GHENTI 623



GHENTI 624

DIMENSIONS AND MOUNTING

LxW height (mm)	GHENTI 621 : 251x106x122 GHENTI 622 : 251x156x156 GHENTI 623 : 301x156x168 GHENTI 624 : 352x156x178
Weight (kg)	GHENTI 621 : 1.4 GHENTI 622 : 2.5 GHENTI 623 : 3.05 GHENTI 624 : 4.12
Mounting Possibilities	Surface Mounting Bracket Mounting
Tilt Angle (°)	0 - 90

CHARACTERISTICS

GENERAL

CE Mark	Yes
---------	-----

HOUSING AND FINISH

Housing	Die-casting Aluminum Alloy
Optic	PC
Protector	Tempered Glass
Housing Finish	RAL 9007
Tightness Level	IP66
Impact Resistance	IK08/IK10
Vibration Test	3G
Anti-Corrosion	WF2

Any other RAL or AKZO colour upon request.

OPERATING CONDITIONS

Operating temperature range (Ta)	-40°C up to +55°C with wind effect
----------------------------------	------------------------------------

Depending on the luminaire configuration. For more details, please contact our Sales Representative.

ELECTRICAL INFORMATION

Electrical Class	Class I
Nominal Voltage	AC 90 - 305V, 50/60Hz
Surge Protection	10kV
Control Protocols	0-10V, DALI
Socket	5-pin NEMA (0-10V) - optional 7-pin NEMA (DALI) - optional

OPTICAL INFORMATION

LED colour temperature	3000K (Warm white WW730) 4000K (Neutral White NW740) 5000K (Cool White CW750)
Colour rendering index (CRI)	>70 (Warm white WW730) >70 (Neutral White NW740) >70 (Cool White CW750)

LIFETIME OF THE LEDS

All configurations	50000h
--------------------	--------

Lifetime may be different according to the size/configurations. Please consult our Sales Representative.

PERFORMANCE



Number of LEDs	Luminaire output flux (lm) >70			Power Consumption (W)	Luminaire Efficacy (lm/W)	
	3000K	4000K	5000K		Min	Max
14	2614	2811	2867	20W	131	143
18	3927	4222	4307	30W	131	144
24	6479	6967	7106	50W	130	142



Number of LEDs	Luminaire output flux (lm) >70			Power Consumption (W)	Luminaire Efficacy (lm/W)	
	3000K	4000K	5000K		Min	Max
30	7863	8455	8624	60W	131	144
36	9834	10621	10857	75W	131	145
44	13052	14034	14315	100W	131	143
56	15495	16662	16995	120W	129	142

PERFORMANCE

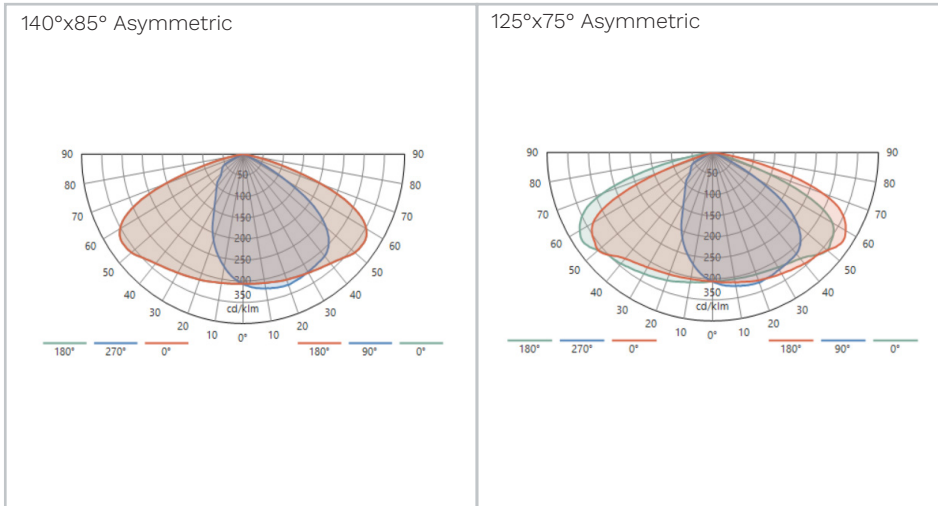


Number of LEDs	Luminaire output flux (lm) >70			Power Consumption (W)	Luminaire Efficacy (lm/W)	
	3000K	4000K	5000K		Min	Max
60	19008	20439	20848	150W	127	139



Number of LEDs	Luminaire output flux (lm) >70			Power Consumption (W)	Luminaire Efficacy (lm/W)	
	3000K	4000K	5000K		Min	Max
72	23243	24993	25493	180W	129	142
84	25898	27847	28404	200W	130	142
96	29324	31532	32162	225W	130	143
96	31047	33384	34052	240W	130	142

LIGHT DISTRIBUTION



ORDERING GUIDE

GHEN Fixture Name	Number of LEDS	CCT	Wattage	NEMA Base/Control	
	<input type="text"/>	-	<input type="text"/>	-	<input type="text"/>
	L14 14LEDs	30 3000K	W20 20 watts	N 7pin NEMA/1-10V	
	L18 18 LEDs	40 4000K	W30 30 watts	DN 7pin NEMA/DALI	
	L24 24 LEDs	50 5000K	W50 50 watts		
	L30 30 LEDs		W60 60 watts		
	L36 36 LEDs		W75 75 watts		
	L44 44 LEDs		W100 100 watts		
	L56 56 LEDs		W120 120 watts		
	L60 60 LEDs		W150 150 watts		
	L72 72 LEDs		W180 180 watts		
	L84 84 LEDs		W200 200 watts		
	L96 96 LEDs		W225 225 watts		
			W240 240 watts		

Note:

1. Schreder reserves the right to update and/or revise product specifications without prior public announcements or publishing of marketing information. Please always consult your nearest Schreder Sales and Commercial Representative for latest and valid product specifications