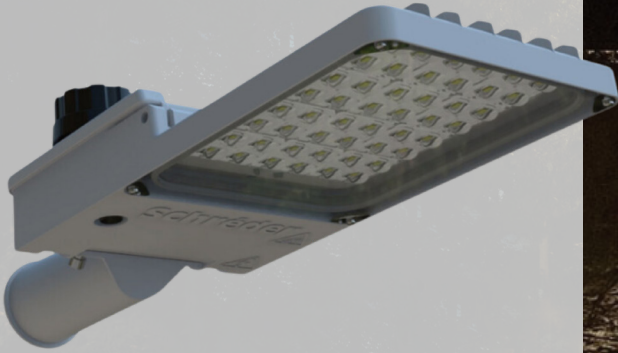


AVENTO LT STREET LIGHT



KEY ADVANTAGES

- > With asymmetric beam angle option
- > With more variations of high quality LED source modules
- > With more wattage variations
- > Highly protected against water and dust
- > Die-casting aluminum body
- > PC optical lens
- > 5mm tempered glass with silk screen

APPLICATIONS



Being at the core of urban and road infrastructure, lighting plays a crucial role in cities' lives. From this perspective, we firmly believe lighting should be both cost-effective and high-performance.

Based on our proven road LED lighting experience, we have developed AVENTO LT, a budget-friendly yet exceptionally efficient road lighting solution. This luminaire has been designed with a focus on compactness, cost-efficiency and superior performance.

AVENTO LT is a robust lighting solution optimised to operate in hot, demanding environments while providing consistent efficacy over time and offering unmatched value. Experience the best in performance with a quick return on investment, with the AVENTO LT LED lighting solution.



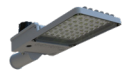
AVENTO LT 1



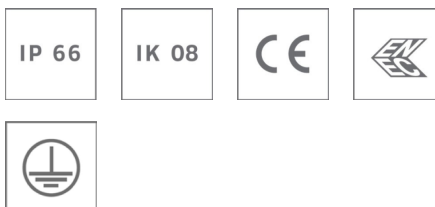
AVENTO LT 2



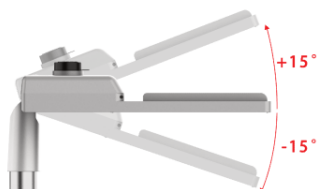
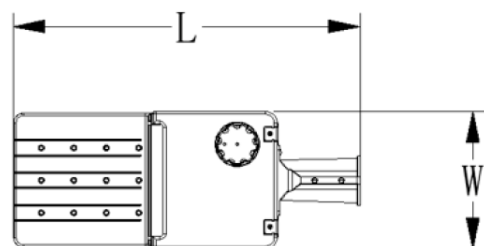
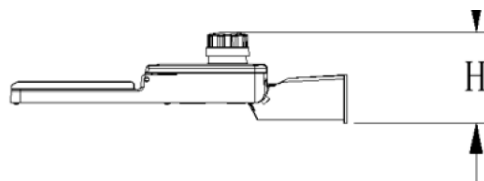
AVENTO LT 3



AVENTO LT 4



DIMENSIONS AND MOUNTING



Rotation Angle : Max 15°

DIMENSIONS AND MOUNTING									
LxW height (mm)	<table border="0"> <tr> <td>AVENTO LT 1</td> <td>: 572x248x202</td> </tr> <tr> <td>AVENTO LT 2</td> <td>: 620x268x202</td> </tr> <tr> <td>AVENTO LT 3</td> <td>: 678x288x202</td> </tr> <tr> <td>AVENTO LT 4</td> <td>: 714x288x202</td> </tr> </table>	AVENTO LT 1	: 572x248x202	AVENTO LT 2	: 620x268x202	AVENTO LT 3	: 678x288x202	AVENTO LT 4	: 714x288x202
AVENTO LT 1	: 572x248x202								
AVENTO LT 2	: 620x268x202								
AVENTO LT 3	: 678x288x202								
AVENTO LT 4	: 714x288x202								
Mounting Possibilities	<table border="0"> <tr> <td>Post Top</td> </tr> <tr> <td>Side Entry</td> </tr> </table>	Post Top	Side Entry						
Post Top									
Side Entry									
Tilt Angle (°)	-15 to +15								

CHARACTERISTICS

GENERAL

CE Mark	Yes
ENEC Certified	Yes

HOUSING AND FINISH

Housing	Die-casting Aluminum
Optic	PC
Protector	Tempered Glass
Housing Finish	RAL 7040
Tightness Level	IP66
Impact Resistance	IK08
Vibration Test	3G
Anti-Corrosion	2500 hrs salt-spray test

Any other RAL or AKZO colour upon request.

OPERATING CONDITIONS

Operating Temperature Range (Ta)	-20°C up to +55°C with wind effect
Relative Humidity (%)	approx. 10% to 95% RH

Depending on the luminaire configuration. For more details, please our Sales Representative.

LIFETIME OF THE LEDS @

All configurations	100000h - L70
--------------------	---------------

Lifetime may be different according to the size/configurations. Please consult our Sales Representative.

ELECTRICAL INFORMATION

Electrical Class	Class I
Nominal Voltage	AC 120-277V 50/60Hz
Surge Protection	10kV
Control Protocols	0-10V, DALI
Socket	7-pin NEMA (0-10V) - optional

OPTICAL INFORMATION

LED colour temperature	2700K (Warm White WW727) 3000K (Warm White WW730) 4000K (Neutral White NW740)
Colour rendering index (CRI)	>70 (Warm White WW727) >70 (Warm White WW730) >70 (Neutral White NW740)

PERFORMANCE



Number of LEDs	Luminaire output flux (lm) >70						Power Consumption (W)	Luminaire Efficacy (lm/W)	
	2700K		3000K		4000K			Min	Max
	Min	Max	Min	Max	Min	Max			
9	2598	2678	2734	2814	2877	2957	20W	130	148
16	7623	7823	8024	8264	8444	8684	60W	127	145
24	8907	9307	9382	9782	9879	10279	70W	127	147
24	11475	11875	12080	12480	12714	13114	90W	127	146



Number of LEDs	Luminaire output flux (lm) >70						Power Consumption (W)	Luminaire Efficacy (lm/W)	
	2700K		3000K		4000K			Min	Max
	Min	Max	Min	Max	Min	Max			
24	12500	12900	12923	13323	13600	14000	100W	125	140
24	14283	14683	15031	15431	15815	16215	120W	119	135
45	19258	19858	20270	20870	21331	21931	150W	128	146

PERFORMANCE

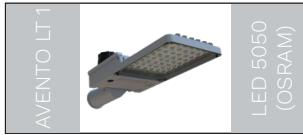


Number of LEDs	Luminaire output flux (lm) >70						Power Consumption (W)	Luminaire Efficacy (lm/W)	
	2700K		3000K		4000K			Min	Max
	Min	Max	Min	Max	Min	Max			
60	25878	26478	27027	27827	28441	29241	200W	129	146
72	31053	31773	32433	33393	34129	35089	240W	129	146

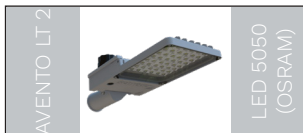


Number of LEDs	Luminaire output flux (lm) >70						Power Consumption (W)	Luminaire Efficacy (lm/W)	
	2700K		3000K		4000K			Min	Max
	Min	Max	Min	Max	Min	Max			
80	35280	36120	36545	37665	38459	39579	280W	126	141
96	41404	42364	43244	44524	45506	46786	320W	129	146

PERFORMANCE



Number of LEDs	Luminaire output flux (lm) >70						Power Consumption (W)	Luminaire Efficacy (lm/W)	
	2700K		3000K		4000K			Min	Max
	Min	Max	Min	Max	Min	Max			
9	2520	2600	2776	2856	2903	2983	20W	127	149
18	7620	7860	8400	8640	8820	9060	60W	127	151
24	9102	9502	10029	10429	10492	10892	70W	130	156
24	11577	11977	12745	13145	13330	13730	90W	129	153

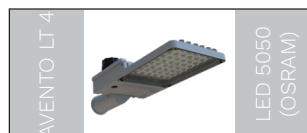


Number of LEDs	Luminaire output flux (lm) >70						Power Consumption (W)	Luminaire Efficacy (lm/W)	
	2700K		3000K		4000K			Min	Max
	Min	Max	Min	Max	Min	Max			
24	12475	12875	13741	14141	14374	14774	100W	125	148
24	14691	15091	16163	16563	16899	17299	120W	119	135
44	19461	20061	21433	22033	22419	23019	150W	130	153

PERFORMANCE

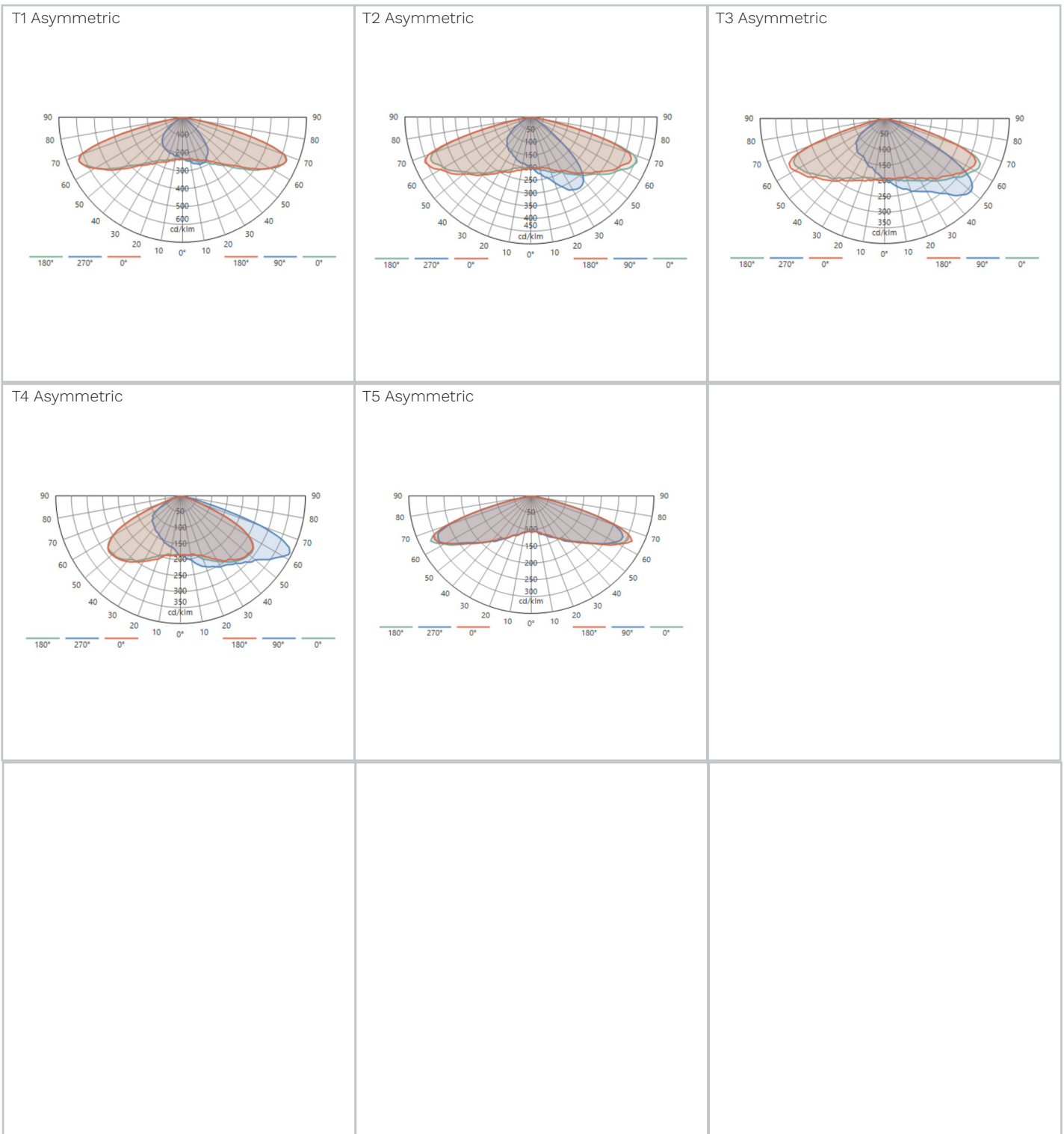


Number of LEDs	Luminaire output flux (lm) >70						Power Consumption (W)	Luminaire Efficacy (lm/W)	
	2700K		3000K		4000K			Min	Max
	Min	Max	Min	Max	Min	Max			
60	25948	26748	28577	29377	29892	30692	200W	130	153
72	31138	32098	34292	35252	35870	36830	240W	130	153



Number of LEDs	Luminaire output flux (lm) >70						Power Consumption (W)	Luminaire Efficacy (lm/W)	
	2700K		3000K		4000K			Min	Max
	Min	Max	Min	Max	Min	Max			
80	35196	36316	38776	39886	40831	41671	280W	126	149
80	41517	42797	45723	47003	47826	49106	320W	130	153

LIGHT DISTRIBUTION



ORDERING GUIDE (FOR CREE LED CHIP)

AVENTLT Fixture Name	Fixture Size	CCT	Optic Type	CRI	No. of LEDs	Current (mA)
	1 Housing Size 1	30 3000K	T1 T1 - Asymmetric	70 Ra 70	9 9 LEDs	21 210mA
	2 Housing Size 2	40 4000K	T2 T2 - Asymmetric		16 16 LEDs	29 290mA
	3 Housing Size 3	50 5000K	T3 T3 - Asymmetric		24 24 LEDs	36 360mA
	4 Housing Size 4		T4 T4 - Asymmetric		45 45 LEDs	40 400mA
			T5 T5 - Asymmetric		60 60 LEDs	47 470mA
					72 72 LEDs	49 490 mA
					80 80 LEDs	55 550mA
					96 96 LEDs	58 580mA
						66 660 mA

Note:

- Schröder reserves the right to update and/or revise product specifications without prior public announcements or publishing of marketing information. Please always consult your nearest Schröder Sales and Commercial Representative for latest and valid product specifications
- Add CR(CREE) and OS(OSRAM) to the end of each code to validate the specific LED chip used in every configuration.

ORDERING GUIDE (FOR OSRAM LED CHIP)

AVENTLT Fixture Name	Fixture Size	CCT	Optic Type	CRI	No. of LEDs	Current (mA)
	1 Housing Size 1	30 3000K	T1 T1 - Asymmetric	70 Ra 70	9 9 LEDs	27 270mA
	2 Housing Size 2	40 4000K	T2 T2 - Asymmetric		18 18 LEDs	35 350mA
	3 Housing Size 3	50 5000K	T3 T3 - Asymmetric		24 24 LEDs	42 420mA
	4 Housing Size 4		T4 T4 - Asymmetric		44 44 LEDs	45 450mA
			T5 T5 - Asymmetric		60 60 LEDs	53 530mA
					72 72 LEDs	56 560 mA
					80 80 LEDs	57 570mA
						58 580mA
						60 600 mA
						68 680 mA

Note:

- Schröder reserves the right to update and/or revise product specifications without prior public announcements or publishing of marketing information. Please always consult your nearest Schröder Sales and Commercial Representative for latest and valid product specifications
- Add CR(CREE) and OS(OSRAM) to the end of each code to validate the specific LED chip used in every configuration.